

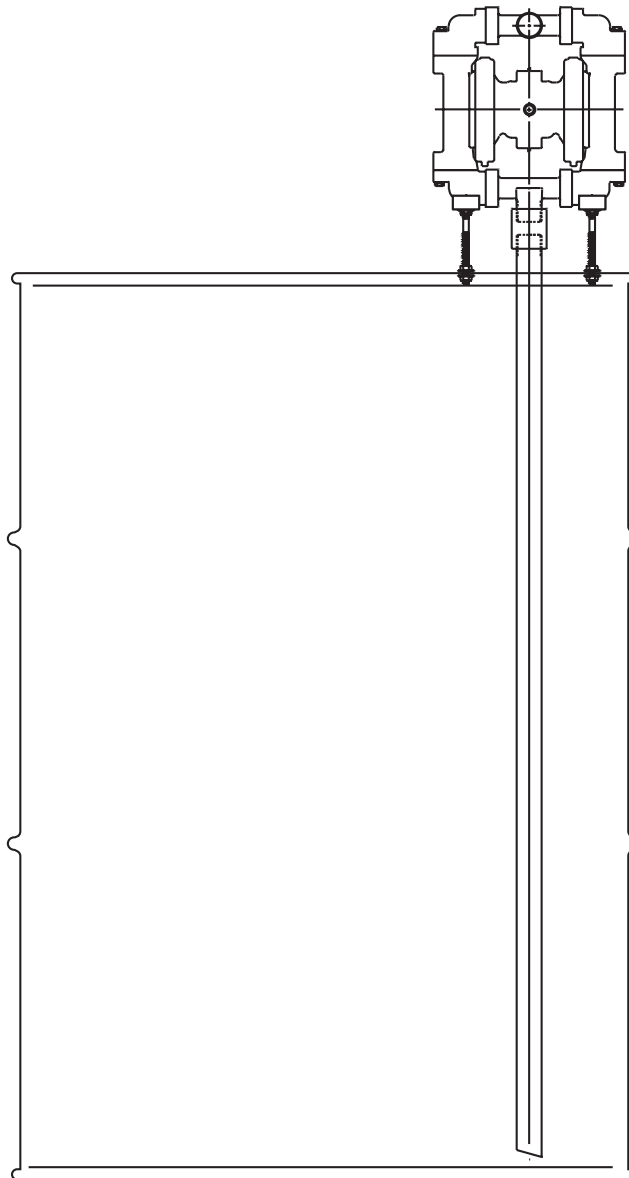
SERVICE & OPERATING MANUAL

ORIGINAL INSTRUCTIONS

VM

55 Gallon Drum Adaptor Kit - 031.V091.555

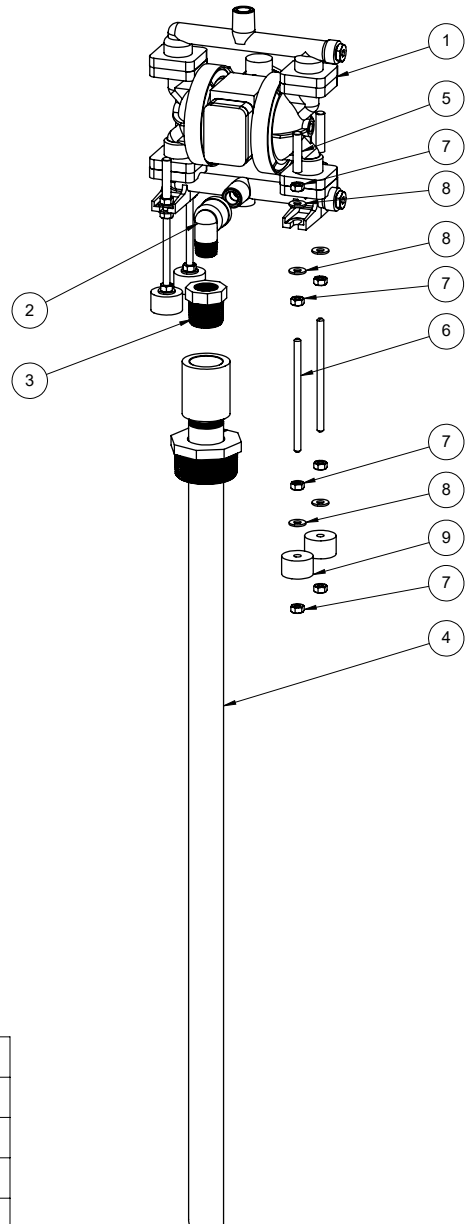
Fits 1/4" and 1/2" pump models



VERSAMATIC®
ACCESSORIES

E6 (1/4" pump)

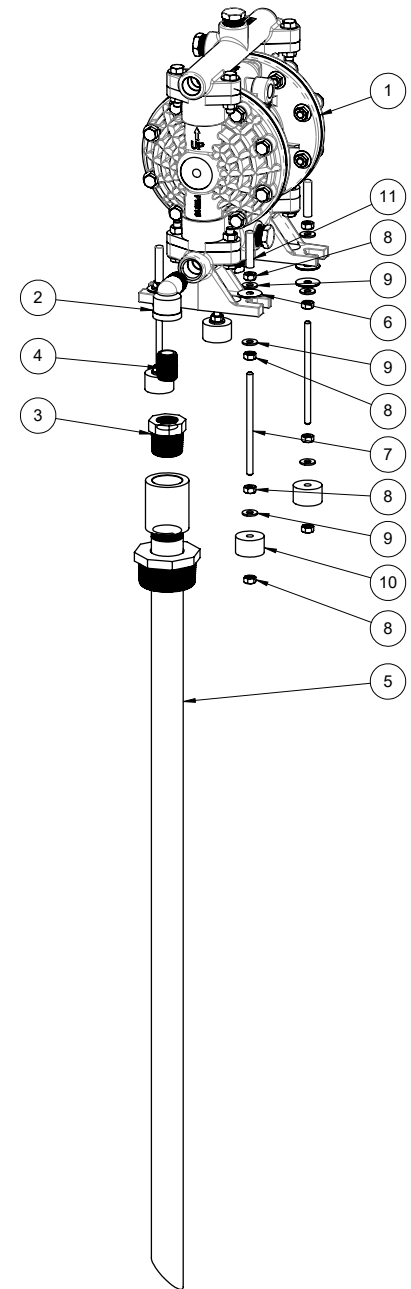
1. Apply PTFE tape to all thread joints to seal the connection with the manifold and pipe assembly.
2. The adaptor kit includes a 312.136.555 1/2" 90° elbow to connect to the suction manifold.
3. Install the 132.021.555 bushing reducer and 595-001-555 pipe assembly to the NPT nipple.
4. Remove the larger bung plug from the drum and slowly lower the pump and pipe into the barrel until the pipe bottoms out on the drum. Snug the locknut on the pipe assembly.
5. Install the four (4) foot assemblies on the pump's suction elbows, using one 545.003.115 nut and 901.035.115 5/8" washer on both the top and bottom of the foot bracket. Adjust the height of the foot assemblies, until the rubber portion of the foot puts a slight amount of pressure on the drum. This will help stabilize the pump.
6. Tighten the locknut on the pipe.



| ITEM NO. | PART NUMBER | DESCRIPTION | QTY. |
|----------|-------------|---------------------|------|
| 1 | E6 | E6 | 1 |
| 2 | 312.136.555 | ELBOW, 90 1/2" | 1 |
| 3 | 132.021.555 | BUSHING, REDUCER | 1 |
| 4 | 595.001.555 | PIPE ASSEMBLY | 1 |
| 5 | 165.094.556 | CAP, PROTECTIVE | 4 |
| 6 | 807.084.115 | STUD, 1/4-20 X 4.50 | 4 |
| 7 | 545.003.115 | NUT, HEX, 1/4-20 | 16 |
| 8 | 901.035.115 | WASHER, FLAT, 1/4 | 12 |
| 9 | 350.002.360 | FOOT, RUBBER | 4 |

E5 (1/2" pump)

1. Apply PTFE tape to all thread joints to seal the connection with the manifold and pipe assembly.
2. The adaptor kit includes a 312.136.555 1/2" 90° elbow and 538.120.555 1/2" NPT nipple to connect to the suction manifold.
3. Install the 132.021.555 bushing reducer and 595-001-555 pipe assembly to the NPT nipple.
4. Remove the larger bung plug from the drum and slowly lower the pump and pipe into the barrel until the pipe bottoms out on the drum. Snug the locknut on the pipe assembly.
5. Install the four (4) foot assemblies to the pump's mounting bracket using one 545.003.115 nut and 901.053.110 1" washer on both the top and bottom foot bracket. Adjust the height of the foot assemblies, until the rubber portion of the foot puts a slight amount of pressure on the drum. This will help stabilize the pump.
6. Tighten the locknut on the pipe.



| ITEM NO. | PART NUMBER | DESCRIPTION | QTY. |
|----------|-------------|-------------------------------|------|
| 1 | E5Pxxxx9C | E5 NON-METALLIC W- BARREL KIT | 1 |
| 2 | 312.136.555 | ELBOW, 90 1/2" | 1 |
| 3 | 132.021.555 | BUSHING, REDUCER | 1 |
| 4 | 538.120.555 | NIPPLE, PIPE 1/2" | 1 |
| 5 | 595.001.555 | PIPE ASSEMBLY | 1 |
| 6 | 901.053.110 | WASHER, FLAT | 8 |
| 7 | 807.084.115 | STUD, 1/4-20 X 4.50 | 4 |
| 8 | 545.003.115 | NUT, HEX, 1/4-20 | 16 |
| 9 | 901.035.115 | WASHER, FLAT, 1/4 | 12 |
| 10 | 350.002.360 | FOOT, RUBBER | 4 |
| 11 | 165.094.556 | CAP, PROTECTIVE | 4 |